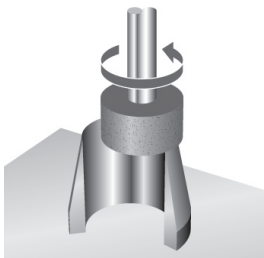


Favorit - Fact Sheet



Favorit Die Sharpening machine

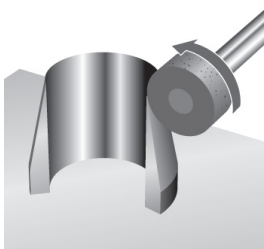
Favorit is the name of the table-top machine which, at a low investment, offers all functions for an unproblematic reshaping of dies made from tooling steel. Well sharpened dies achieve long useful lives and an optimal die-cutting quality, apart from enabling the production system to run faster, more efficiently and therefore cost-effectively. Dies from 30 to 100 mm height can be processed. However, the Favorite is not suitable for dies made of hard metal (carbide).



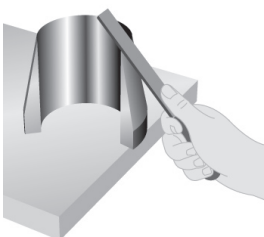
Surface grinding



Angular grinding of the cutting edges



Possibilities of hollow grinding for special applications.



The finish of the cutting edge is achieved with accessories included in the offered standard material.